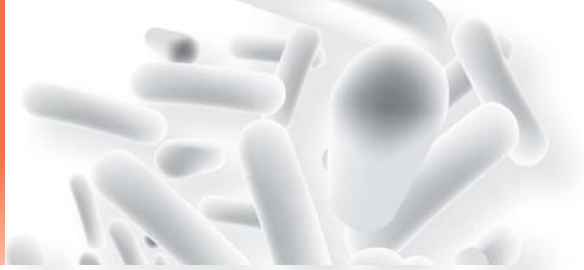


Accessories

> Inserts

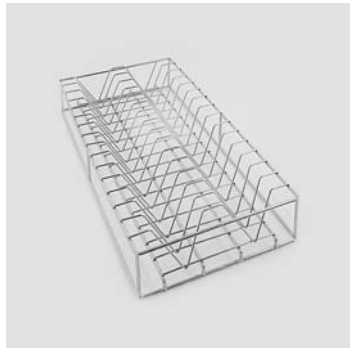


C61
> insert with 28 spring hooks for laboratory glassware



C63
> net basket 4.7"x4.7"x4.7" [120x120x120]

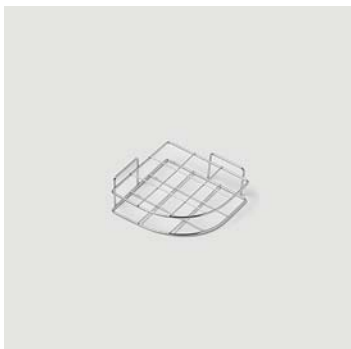
C64
> lid for C64



C97
> 30 positions insert for Petri dishes



C70
> net basket 1/4, H = 8" [200]
C68
> net basket 1/4, H = 4" [100]
C69
> net basket 1/4, H = 5" [130]
C77
> lid for C68/69/70



C86
> net separator for 1/4 net basket

Detergent cabinet

- Two levels wide detergent compartment to store up to four 1.32 gal. [5 lt.] chemical containers.



Water purification system

DI water rinsing helps to ensure the removal of detergent residues and grants effective cleaning results.

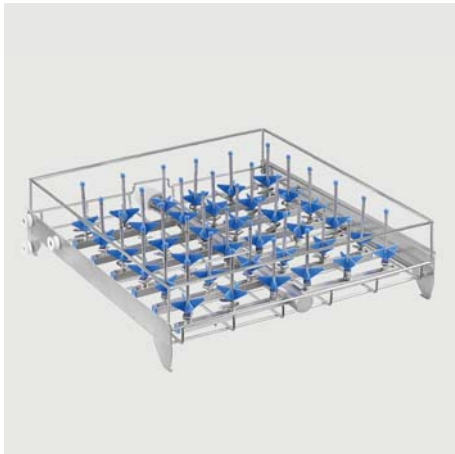
- Stainless steel water purificator container WxDxH 11.8"x25"x33" [300 x 630 x 840]
- Provided with 2.64 gal. [10 lt] resin plastic cartridge - H=20" [500] - dm 8" [210]
- Equipped with priming and pressure relief valve and conductivity system pressure proof up to 140 psig [10 bar]



Accessories

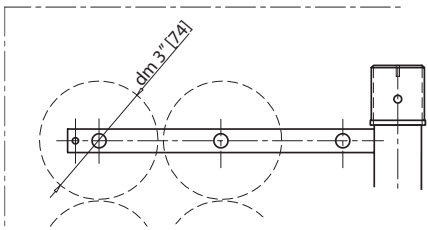
> Baskets

for models LAB 500, 500 C only



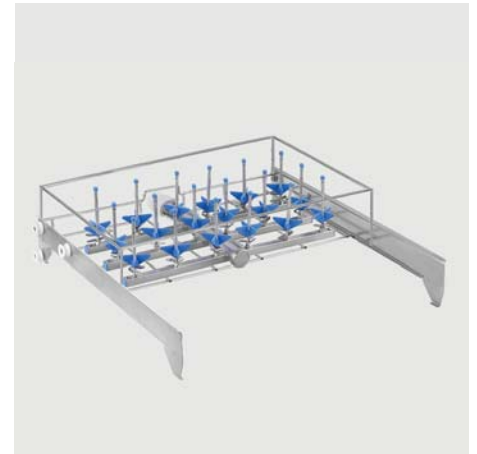
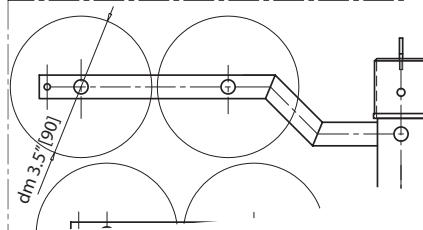
C711

> upper basket
36 jets, 3"/4.3" height [75/110] - dm 1/4" [6]



C712

> upper basket
25 jets, 5"/6.7" height [130/170] - dm 1/4" [6]

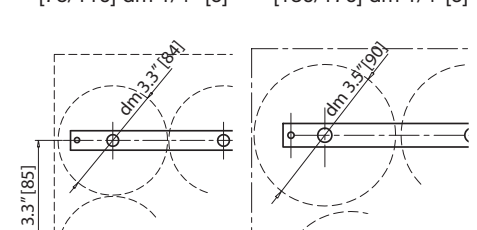


C713

> upper basket 18
jets, 3"/4.3" height
[75/110] dm 1/4" [6]

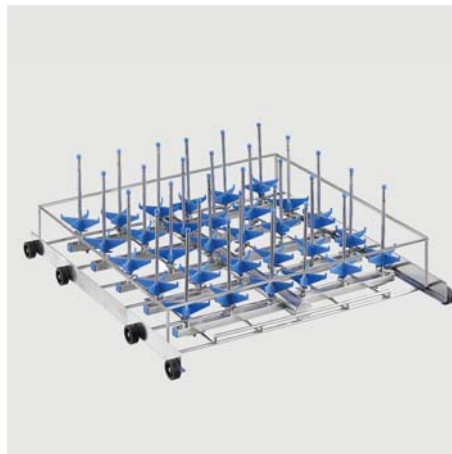
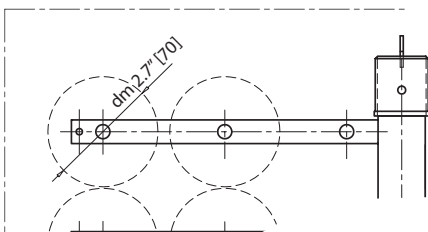
C714

> upper basket 12
jets, 5"/6.7" height
[130/170] dm 1/4" [6]



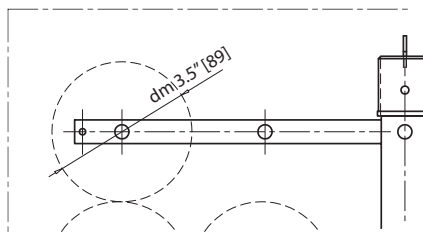
C715

> lower basket
36 jets, 3"/4.3" height [75/110] - dm 1/4" [6]



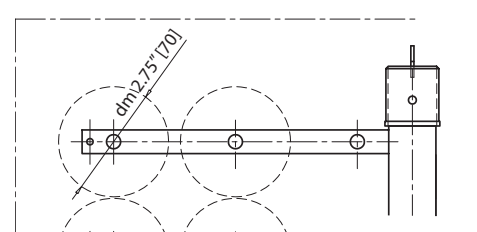
C716

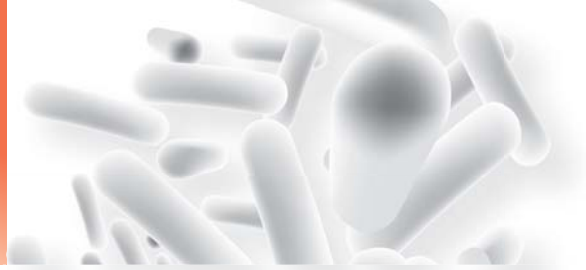
> lower basket
25 jets, 5"/6.7" height [130/170] - dm 1/4" [6]



C717

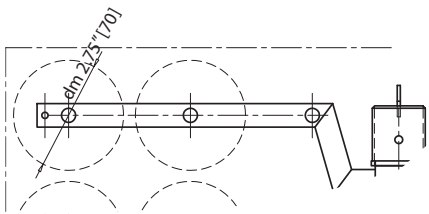
> lower basket
12 jets, 3"/4.3" height [75/110] dm 1/4" [6]





C723

> upper mixed basket for centrifuge tubes, vials, test tubes with 121 positions + 18 jets, 3"/4.3" height [75/110] dm 1/4" [6]



C721

> upper basket with washing arm



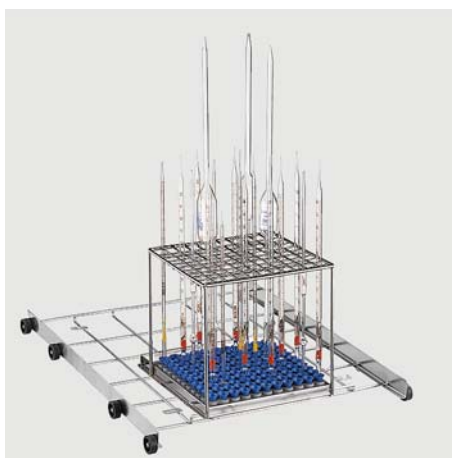
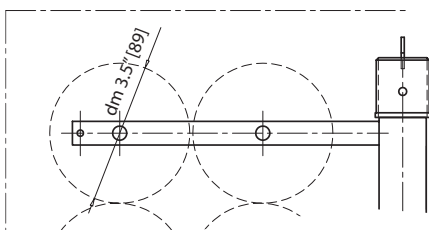
C720

> lower basket with 2 pipettes cassettes max length 11.8" [300]



C718

> lower basket 10 jets, 5"/6.7" height [130/170] - dm 1/4" [6]



C719

> lower vertical pipettes basket 120 positions



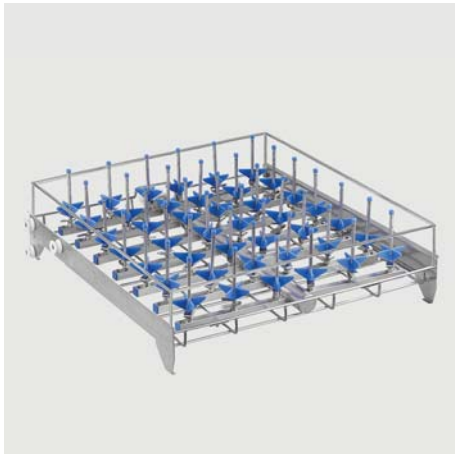
C52

> lower basket

Accessories

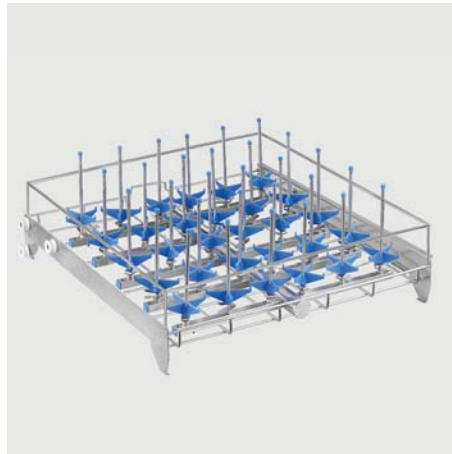
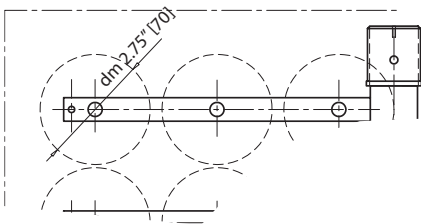
> Baskets

for models LAB 600, 610 only



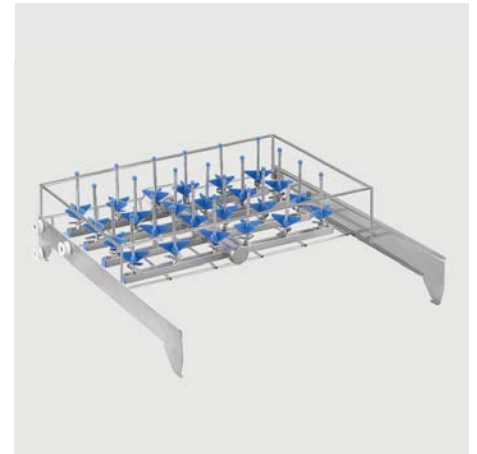
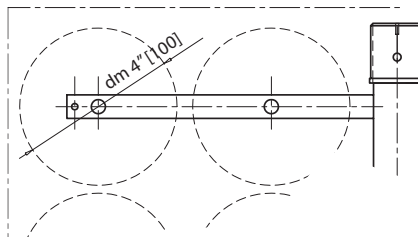
C724

> upper basket
42 jets, 3"/4.3" height [75/110] - dm 1/4" [6]



C725

> upper basket
20 jets, 5"/6.7" height [130/170] - dm 1/4" [6]

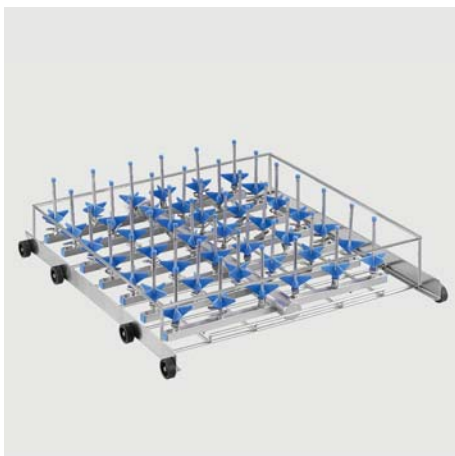
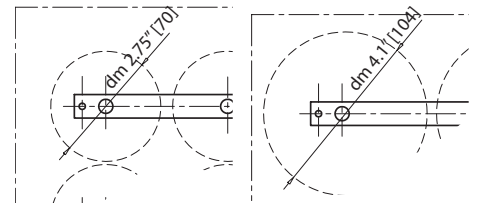


C726

> upper basket 24 jets
3"/4.3" height
[75/110] - dm 1/4" [6]

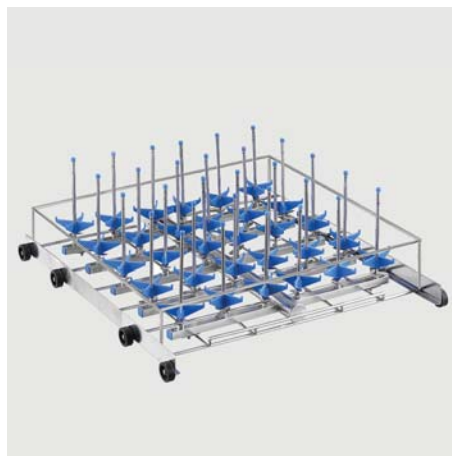
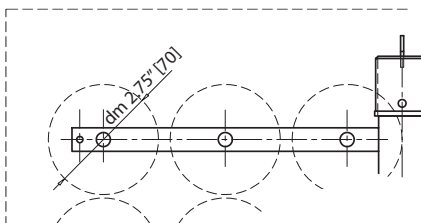
C727

> upper basket 12 jets
5"/6.7" height [130/
170] - dm 1/4" [6]



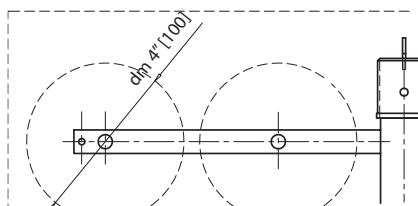
C729

> lower basket
42 jets, 3"/4.3" height [75/110] - dm 1/4" [6]



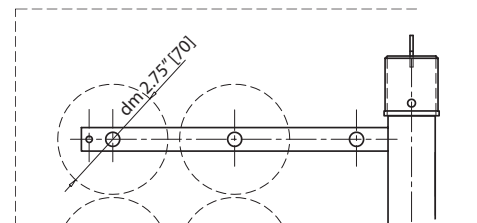
C730

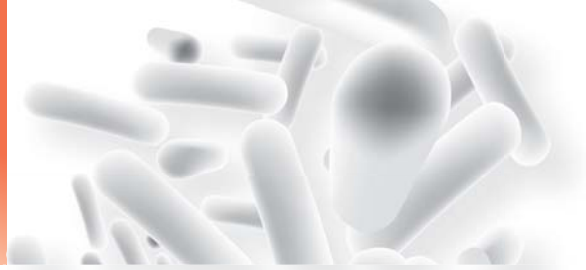
> lower basket
20 jets, 5"/6.7" height [130/170] - dm 1/4" [6]



C731

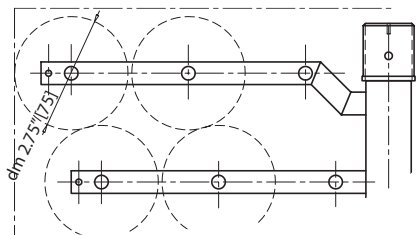
> lower basket
24 jets, 3"/4.3" height [75/110] - dm 1/4" [6]





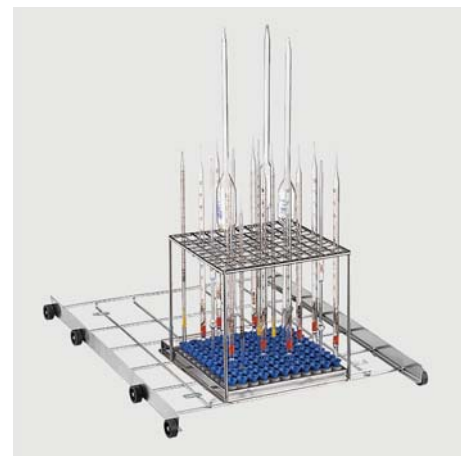
C746

> upper mixed basket for centrifuge tubes, vials, test tubes with 121 positions + 24 jets 3"/4.3" height [75/110] - dm 1/4" [6]



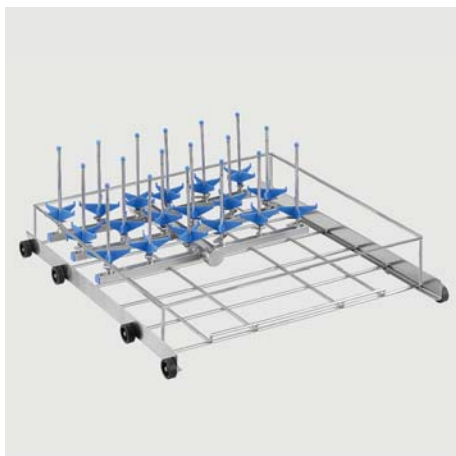
C728

> upper basket with washing arm



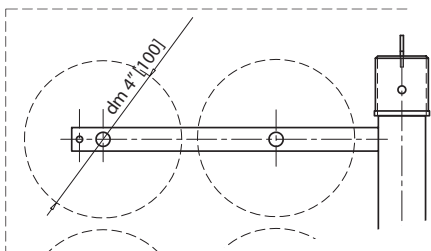
C733

> lower vertical pipettes basket 120 positions



C732

> lower basket 12 jets, 5"/6.7" height [130/170] - dm 1/4" [6]



C734

> lower basket with 2 pipettes cassettes max length 23" [600]



C736

> lower basket

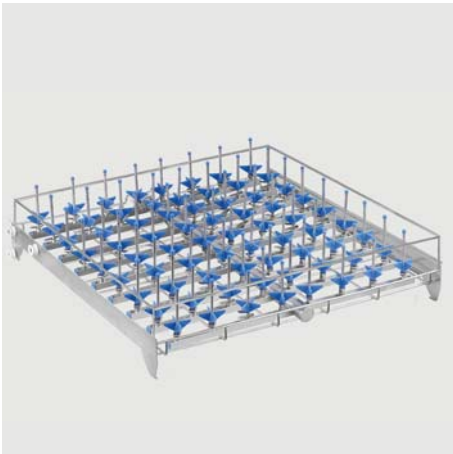
C735

> lower basket with 3 pipettes cassettes max length 23" [600]

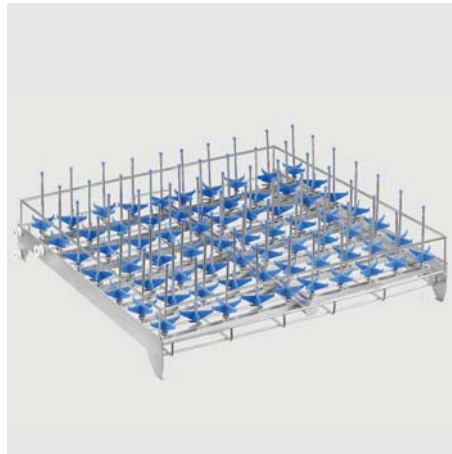
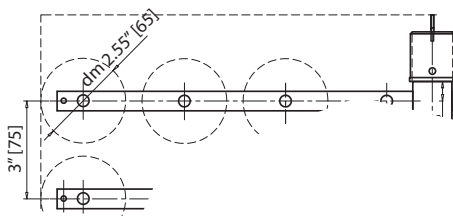
Accessories

> Baskets

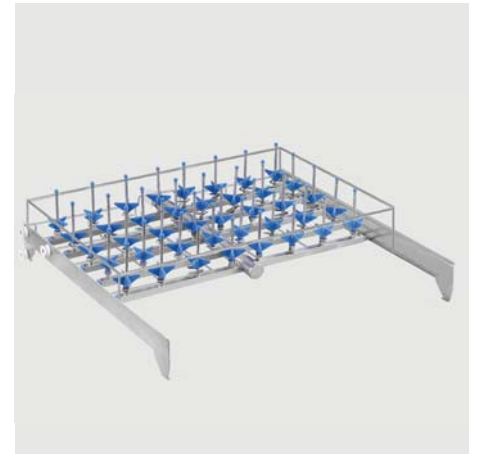
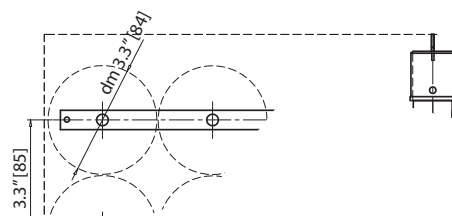
for models LAB 680 only



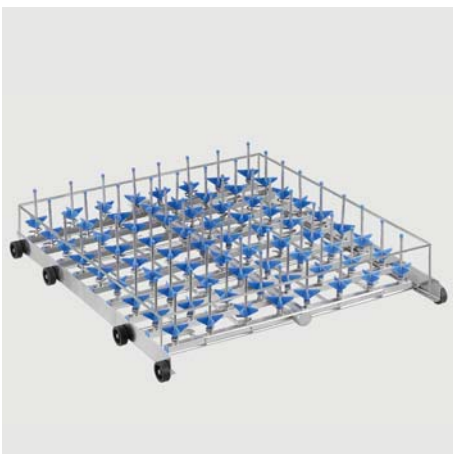
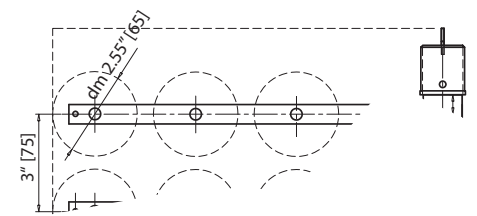
C410
 > upper basket
 72 jets, 3"/4.3" height [75/110] - dm 1/4" [6]



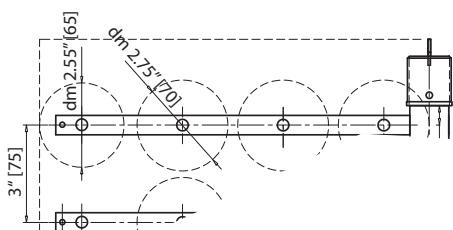
C411
 > upper basket
 56 jets, 5"/6.7" height [130/170] - dm 1/4" [6]



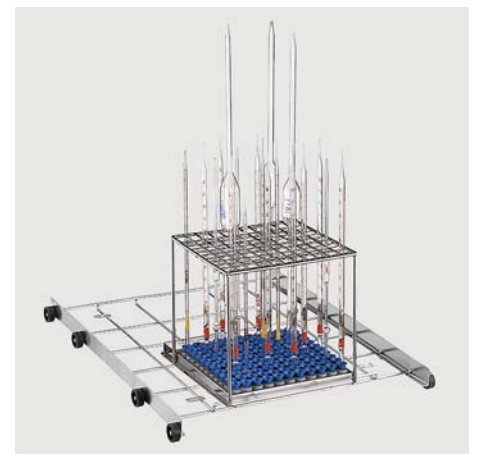
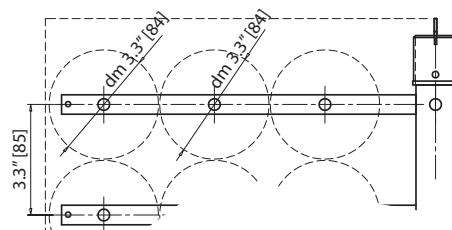
C412
 > upper basket
 40 jets, 3"/4.3" height [75/110] - dm 1/4" [6]



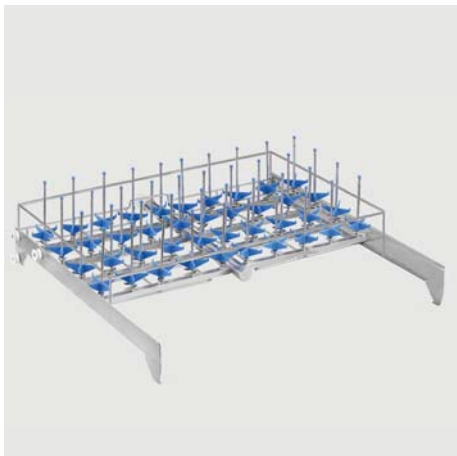
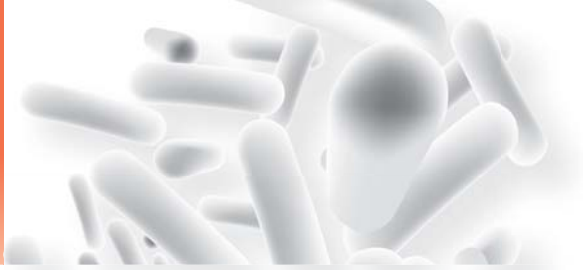
C414
 > lower basket
 72 jets, 3"/4.3" height [75/110] - dm 1/4" [6]



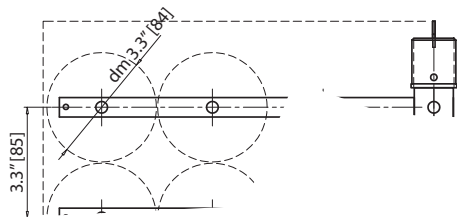
C415
 > lower basket
 56 jets, 5"/6.7" height [130/170] - dm 1/4" [6]



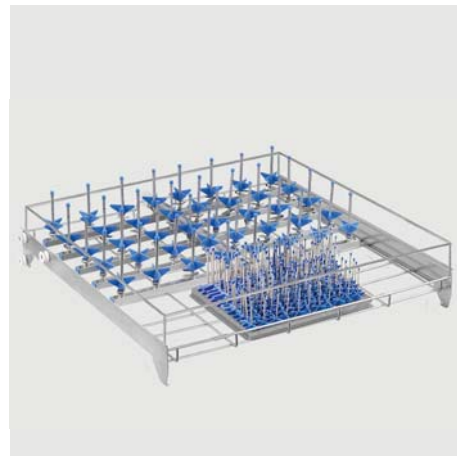
C416
 > lower vertical pipettes basket 120 positions



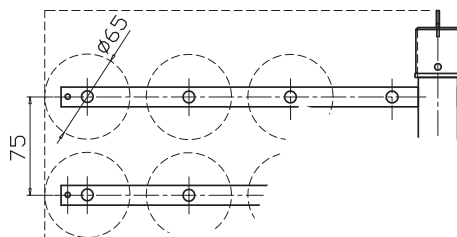
C413
 > upper basket
 32 jets, 5"/6.7" height [130/170] - dm 1/4" [6]



C420
 > upper basket with washing arm



C421
 > upper mixed basket for centrifuge tubes, vials, test tubes with 121 positions + 40 jets
 3"/4.3" height [75/110] - dm 1/4" [6]



C417
 > lower basket with 2 pipettes cassettes
 max length 23" [600]



C418
 > lower basket with 3 pipettes cassettes
 max length 23" [600]

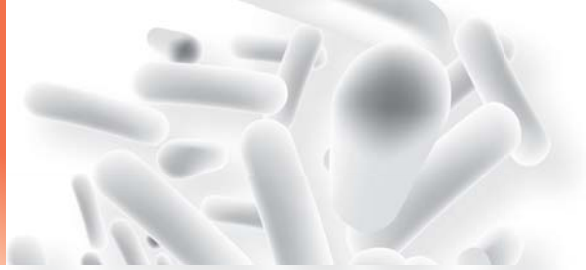


C419
 > lower basket

Accessories

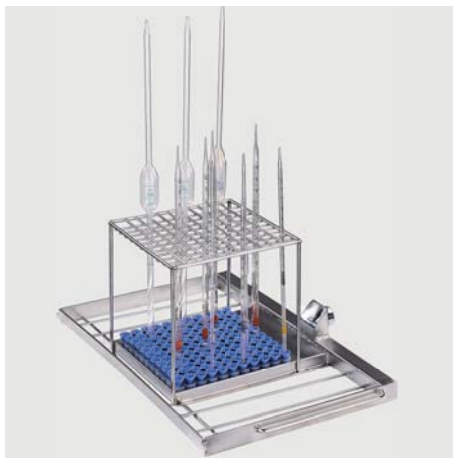
> Baskets

for model LAB 1000 only



C400

- > injection basket with removable levels
- Capacity:
 - 2 x C402 cassettes into upper level + 2 x C403 cassettes into lower level.
 - 1 x C402 cassette into upper level, 1 x C403 cassette into lower level and 1 x C401 pipettes cassette into lower level



C401

- > lower vertical pipettes cassette
- 120 positions



C402

- > upper cassette
- 32 jets, 3"/4.3" height [75/110] - dm 1/4" [6]

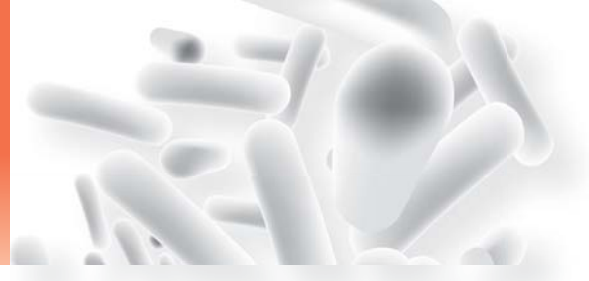


C403

- > lower cassette
- 22 jets, 5"/6.7" height [130/170] - dm 1/4" [6]

Accessories

> Inserts



> Injection nozzle dm 1/10" [2.5] with cone

Part # **C054906**

Height 2.4"/3.1" [60/80]



> Injection nozzle dm 1/10 [2.5] with plastic cross

Part # **C054903**

Height 2.4"/3.1" [60/80]



> Injection nozzle dm 1/6" [4] with plastic cross

Part # **C054904**

Height 5.5"/6.7" [140/170]

Part # **C054924**

Height 2.8"/4" [70/100]



> Injection nozzle dm 1/4" [6] with plastic cross

Part # **C054905**

Height 7.1"/8.7" [180/220]

Part # **C054922**

Height 5.5"/6.7" [140/170]

Part # **C054910**

Height 4"/5.1" [100/130]

Part # **C054921**

Height 3.1"/4.3" [80/110]



> Injection nozzle dm 1/4" [6] with plastic cross dm 2.1"[54] and bottle support

Part # **C054911**

Height 7.1"/8.7" [180/220]

Part # **C054909**

Height 4"/5.1" [100/130]



> Injection nozzle ø 6 mm with plastic cross ø 75 mm and bottle support

Part # **C054908**

Height 4"/5.1" [100/130]



> Plastic cross dm 2.1"[54]

Part # **C054008** dm 1/10" [2.5]

Part # **C054009** dm 1/6" [4]

Part # **C054010** dm 1/4" [6]



> Plastic cross ø 75 mm

Part # **C402001** dm 1/4" [6]

Accessories

> Inserts



> Bottle support for injection nozzle

Part # C054915		
	dm 1/4" [6]	Height 7.8" [200]
Part # C054916		
	dm 1/4" [6]	Height 5.1" [130]



> Cap for pipe

Part # C054006		dm 1/10 [2.5]
Part # C054005		dm 1/6" [4]



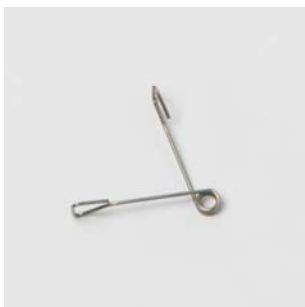
> Cap for pipe with two holes

Part # C054007		dm 1/4" [6]
-----------------------	--	-------------



> Plastic cone

Part # C057007		dm 2/3" [16]
-----------------------	--	--------------



> Spring for injection nozzle

Part # C054016		dm 1/10" [2.5]
Part # C054015		dm 1/6" [4]
Part # C054014		dm 1/4" [6]



> Flat spring for injection nozzle

Part # C054029		dm 1/6" [4]
Part # C054027		dm 1/4" [6]



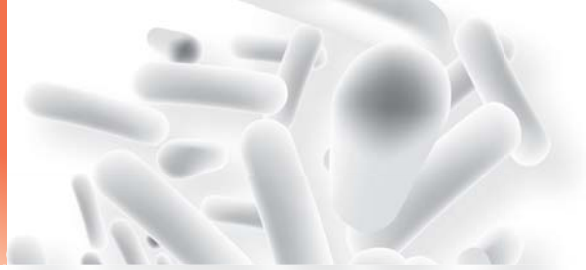
> Cap for bottle support

Part # C054028		dm 1/12" [2]
-----------------------	--	--------------



> Injection nozzles

Part # C102901		
	dm 1/4" [6]	Height 6.7" [170]



> Injection nozzle

Part # **C102903**

dm 1/6" [4] Height 4" [100]

Part # **C102902**

dm 1/6" [4] Height 6.7" [170]



> Injection nozzles Ø 6 mm tube

Part # **C054917**

dm 1/4" [6] Height 4.3" [110]

Part # **C054918**

dm 1/4" [6] Height 5.1" [130]

Part # **C054919**

dm 1/4" [6] Height 6.7" [170]

Part # **C054920**

dm 1/4" [6] Height 8.6" [220]



> Injection nozzle support

Part # **C054925**

dm 1/4" [6] Height 4.3" [110]

Part # **C054926**

dm 1/4" [6] Height 6.7" [170]



> Support for pipettes with silicone guard

Part # **C058901**



> Guard in silicone

Part # **C058003**



> Gasket for pipette cone Ø 6 mm

Part # **C056003**

dm 1" [25] Height 1.6" [40]



> Pipettes cone

Part # **C401001**

dm 5/6" [20] Height 0.9" [22]

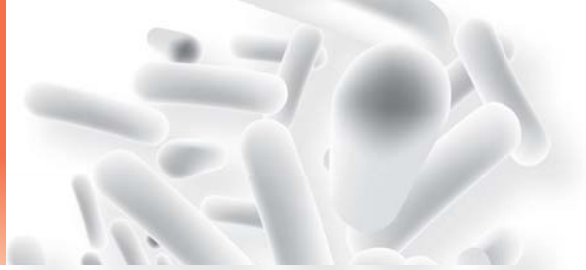


> Cap

Cod. **C056001**

Accessories

> Inserts



> Support for gasket pipette Ø 8 mm

Part # **C056002**

dm 1" [25]

Height 1.6" [40]



> Cap 0.6" x 0.6" [15 x 15]

Part # **C054004**



> Nozzle for washing pipe

Part # **C013003**

dm 1" [25]

Height 1.6" [40]



> Cap 1" x 1" [25 x 25]

Part # **C080004**